

SAP S/4HANA Analytics

SAP Fiori brings the innovations of SAP S/4HANA to business users

**SAP Fiori is THE
user interface for SAP S/4HANA**

SAP GUI focus on customizing and some expert use cases

**S/4HANA innovations are only
delivered through SAP Fiori**

Different user behavior

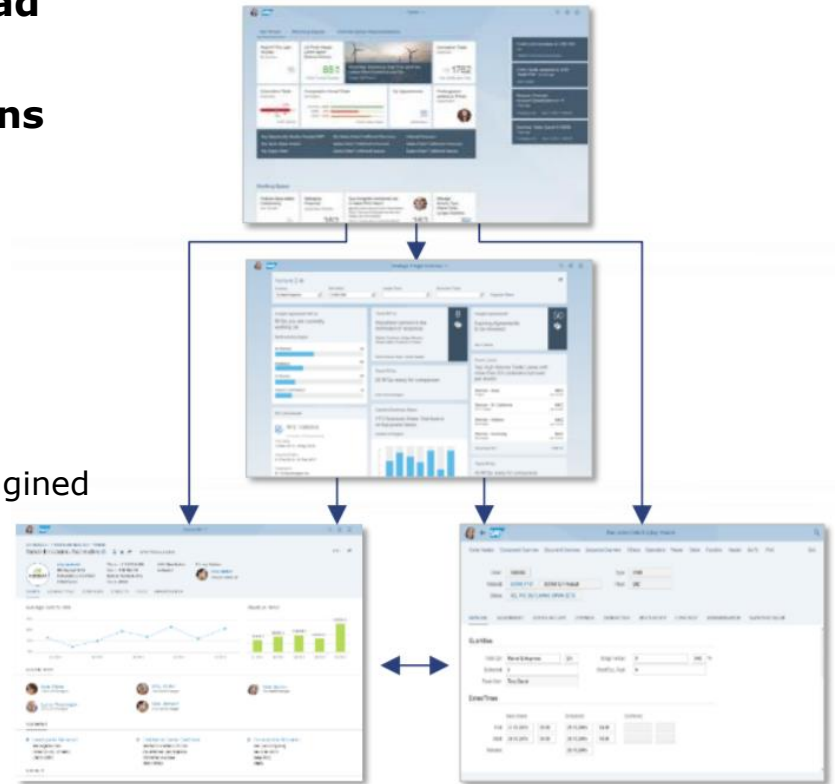
Single entry point = SAP Fiori Launchpad

Domain specific actions and informations

- Overview of what needs user attention
- Overview Pages, List Reports, Work Lists, can trigger quick actions or drill down to the next level of detail

Explore detail in depth

- Key and differentiating use cases will be re-imagined with the SAP Fiori user experience
- All "classic" transactions will have the SAP Fiori visual theme



What is SAP S/4HANA embedded analytics?

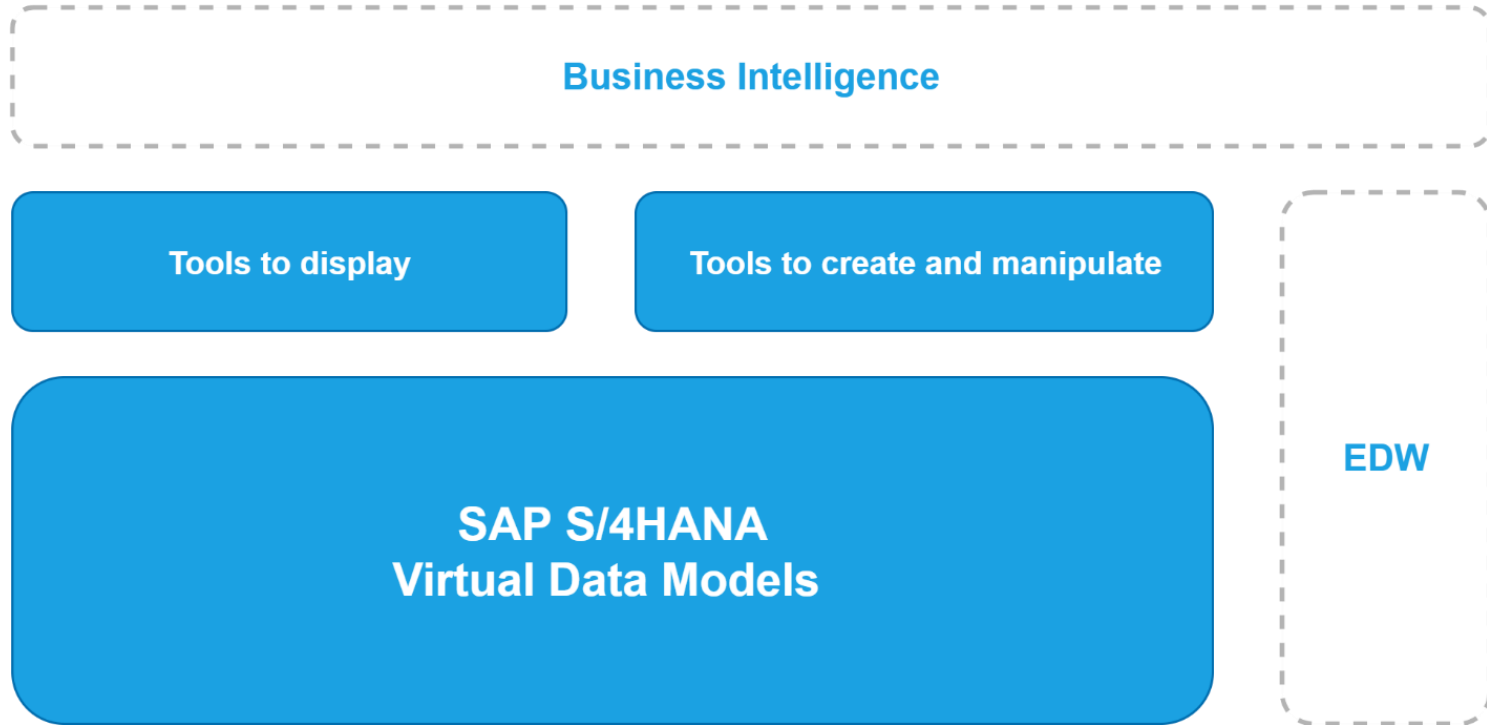
SAP S/4HANA embedded analytics

- A collection of analytics features
 - A set of SAP content delivered self-service data representations (i.e. virtual data models) to derive real-time insights from the data without any detail knowledge of underlying data structure
-
- Comes with tools for business users, power users and developers
 - Can be built directly into transactional business processes
 - Can be consumed by separate analytics applications

The goal is to improve the efficiency and effectiveness of the business process through integration, analysis and visualization of analytics and KPIs, within the range of the business process execution.



Architecture overview



Use cases for SAP S/4HANA embedded analytics

To get the very latest contextual information in transaction

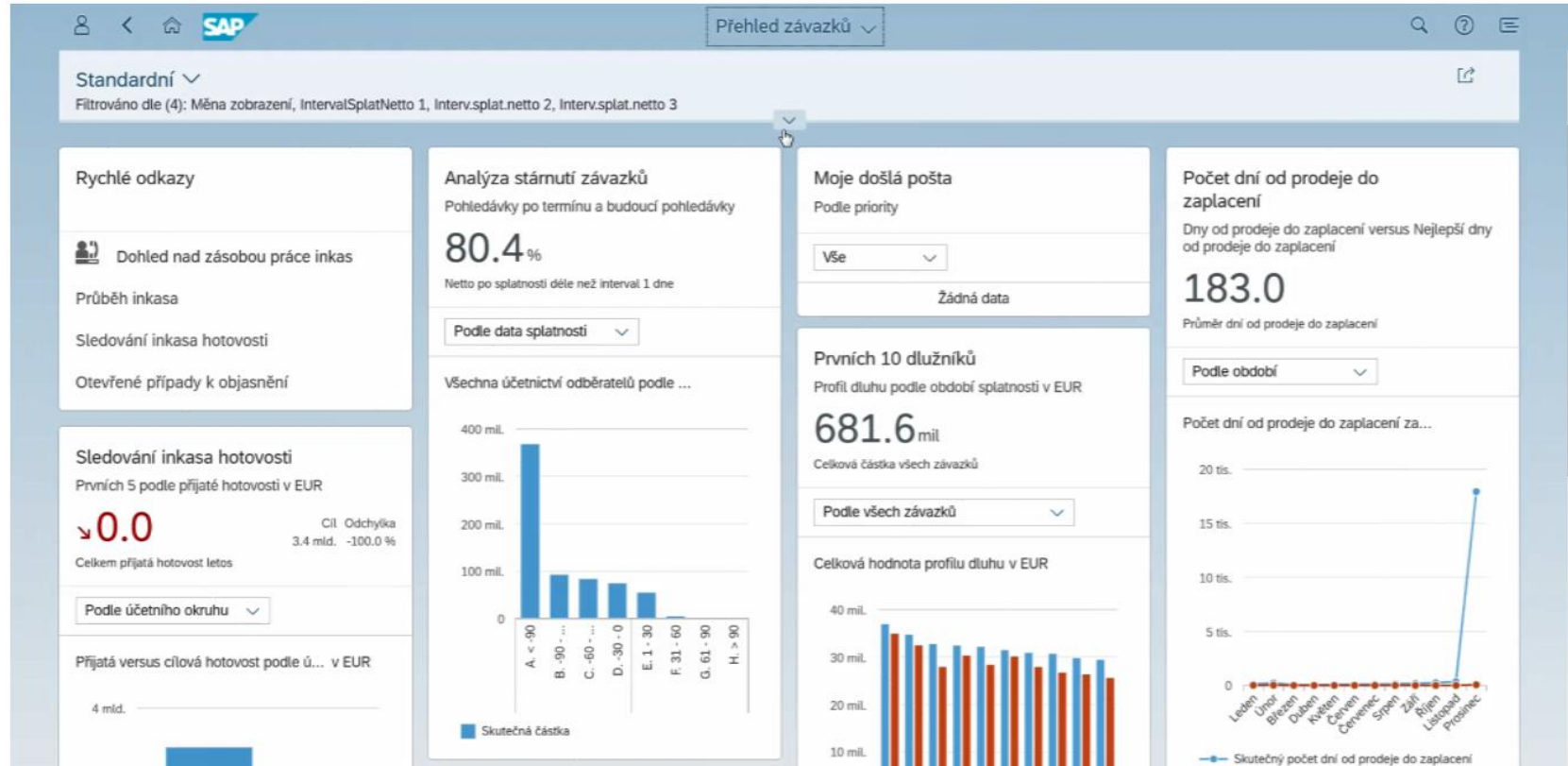
- Operational data (e.g. Accounts Receivable, Days Sales Outstanding, Open Sales Orders)
- Real-time
- Transactional decision support
- Lightweight (modeling and consumption)
- Uniform
- Extensible and basis for multiple embedded use cases
- Model reuse in analytical applications
- Lightweight planning solutions

What is not possible using SAP S/4HANA embedded analytics?

- Advanced Dashboarding, Pixel-perfect Visualization
- Data Warehousing, Enterprise-wide data harmonization, Data replication

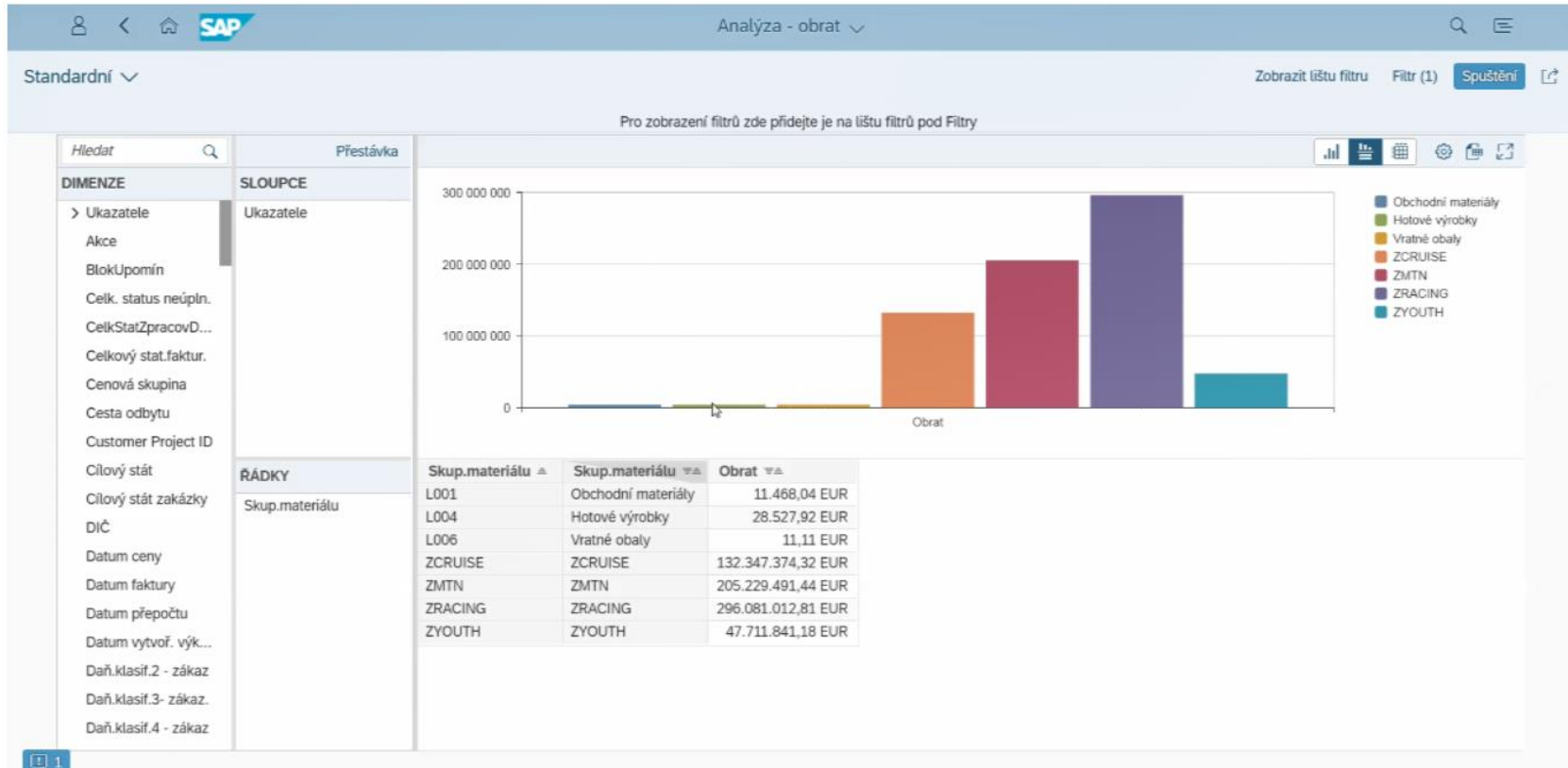
End user tooling

Overview page



End user tooling

Query browser



Business intelligence example

SAP Analysis for Microsoft Excel

The screenshot displays the SAP Analysis for Microsoft Excel interface. The main window shows a data table with columns for Sales Organization, Material Group, Net Value, Sales Volume, Cancellations, Profit Margin, and Profit Margin. The 'Analyza' (Analysis) task pane is open on the right, showing the 'Zdroj dat' (Data Source) section with 'Fixed Value Date' selected. The 'Vlastnosti' (Properties) section shows the 'Všeobecné' (General) tab with 'Analytics - Sales Volume' selected. The 'Potažit nulu v řádkách' (Drag zero in rows) and 'Potažit nulu ve sloupcích' (Drag zero in columns) options are checked. The 'Součty' (Totals) section shows 'Součty v řádkách nad členy' (Totals in rows above members) checked. The 'Všeobecný formát' (General format) section shows 'Zobrazit záporných hodnot' (Show negative values) set to '-X' and 'Zobrazit nulu jako:' (Show zero as:) set to 'S měnou/jednotkou' (With unit/currency).

				Net Value	Sales Volume	Cancellations	Profit Margin	Profit Mar
				EUR	EUR	EUR	EUR	EUR
1710	Dom. Sales Org US	L001	Trading Materials	13 193,60	11 468,04	285,17	4 275,66	
		L004	Finished Goods	29 313,47	28 527,92	392,78	20 146,91	
		L006	Returnable Packaging	11,11	11,11	0,00	11,11	
	ZCRUISE	Cruise	132 347 374,32	132 347 374,32	0,00	29 374 196,58		
	ZMTN	Mountain	205 229 491,44	205 229 491,44	0,00	57 482 406,74		
	ZRACING	Racing	296 081 012,81	296 081 012,81	0,00	67 832 962,60		
	ZYOUTH	Youth	47 711 841,18	47 711 841,18	0,00	20 724 817,92		
Overall Result				681 412 237,92	681 409 726,81	677,94	175 438 817,53	

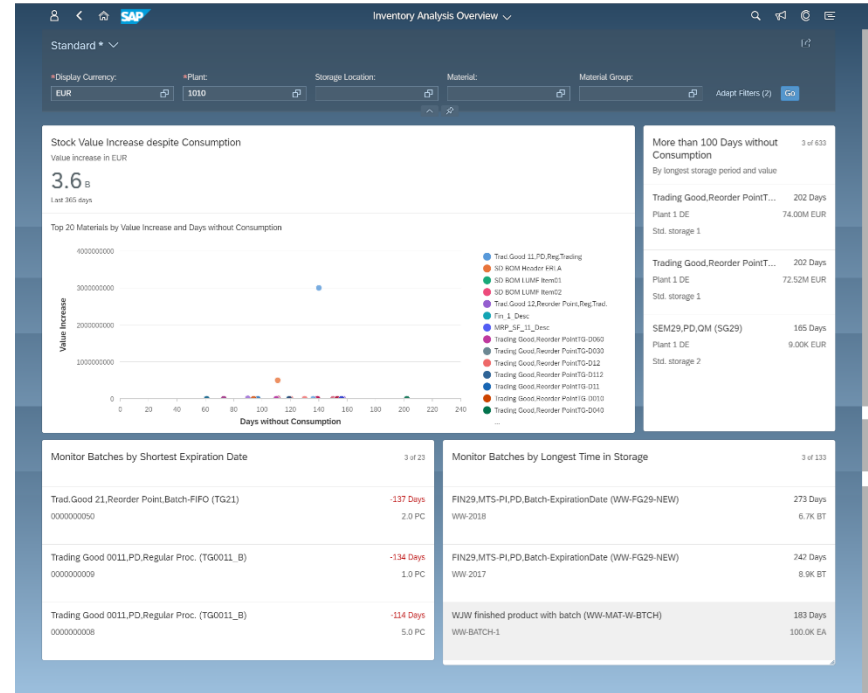
Standard Fiori app for analytics

Analytical SAP Fiori applications

- Available only after activation
- [Fiori Apps Library](#)
Application type of analytical app is set to be “Analytical”
- Predefined standard Fiori apps might be the easiest way to try embedded analytics or Fiori

Extending Standard Fiori app

- Custom Fields and Logic
- UI Adaption
- Manual adjustment



EDW vs. SAP S/4HANA embedded analytics

What to do where?

Core EDW functions (SAP BW/4HANA)

- Data replication (Snapshots, Performance enhancements)
- Enterprise-wide data harmonization
- Data federation/mashing (EDW)
- Data governance
- LSA modeling
- SAP and non-SAP data
- Archiving (for delta comparison)
- Planning

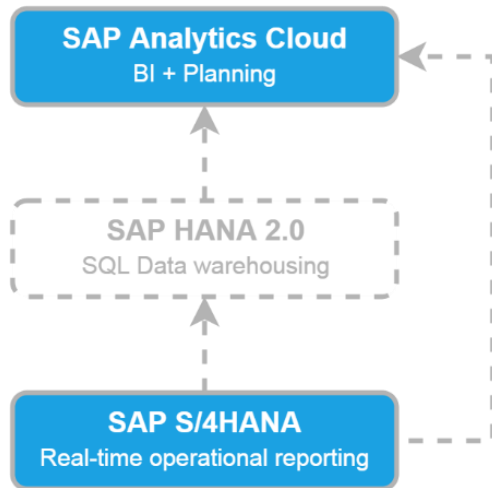
SAP S/4HANA embedded analytics

- Operational data
- Real-time data access
- Transactional decision support
- KPI-driven process handling

SAP S/4HANA use cases for EDW

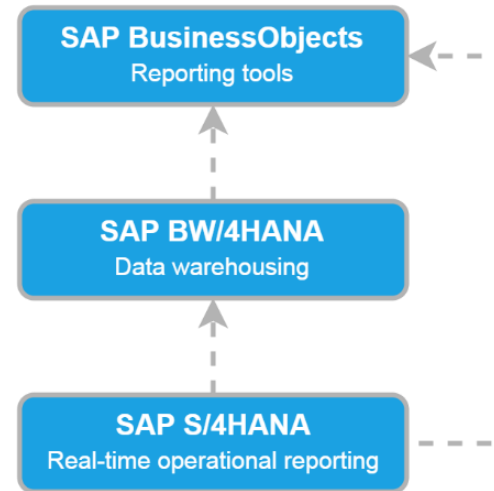
Scenario 1

- Only (or mostly) S/4HANA data
- No need for enterprise wide data harmonization
- Any or a few non-SAP sources
- Possible lightweight planning solution



Scenario 2

- SAP and non-SAP data
- Complex data consolidation
- Real-time and historical comparison (e.g. trends)
- Data archiving
- Heavy analytic models



working:together

marek.svec@mibcon.cz